



THE LONDON SCHOOL  
OF ECONOMICS AND  
POLITICAL SCIENCE ■

# Working with LSE Careers

Student Leaders Conference 2024





THE LONDON SCHOOL  
OF ECONOMICS AND  
POLITICAL SCIENCE ■

# Agenda

01. Who are LSE Careers
02. Student Opportunities Coordinator
03. Your Professional Development
04. Support with marketing your event
05. Event Discussion + Case Studies
06. Top Tips + How to stay in contact





THE LONDON SCHOOL  
OF ECONOMICS AND  
POLITICAL SCIENCE

# Who are LSE Careers?

## What can we offer you?

We have previously collaborated with societies on types of events including:

- Panel discussions
- Occupational talks
- Networking evenings
- Skills workshops

## We can also support you with:

- Advice around running and delivering events
- Scheduling events to avoid clashes and/or duplication
- Signposting to careers related events

You can check out LSE Careers [offer for the year ahead](#) to see what sort of events events and initiatives we deliver

## Meet the Team

Discover   Banking and financial services	Priyanka Kumar
Discover   Consultancy	James Taylor
Discover   Law and legal services	Doreen Thompson-Addo
Discover   Sustainability	Lewis Humphreys
Discover   International organisations	Bryony Wills
Discover   FMCG and global brands	Nathan Tamea
Discover   Data	Daniel Gendle/ James Taylor
Discover   Careers with social impact	Maria Kramer
Discover   Tech?	Amy Fox
Discover   Careers in creative industries	James Taylor/ Shayna Main
Discover   Political risk	Edmund Lewis
Discover   International development?	Lewis Humphreys
Discover   Public sector and policy	Nathan Tamea

Race Equity	Ladan Mirzadeh Hong
Support for Disabled students	Edmund Lewis/ Viki Chinn
Support for LGBTQ+ students	Emma Muller/ Priyanka Kumar
Social mobility	James Taylor
Support for students identifying as women	Bethan Briggs/ Priyanka Kumar

[lse.ac.uk/careers](https://lse.ac.uk/careers)



THE LONDON SCHOOL  
OF ECONOMICS AND  
POLITICAL SCIENCE ■

# What collaboration are you interested in?



[lse.ac.uk/careers](https://lse.ac.uk/careers)



THE LONDON SCHOOL  
OF ECONOMICS AND  
POLITICAL SCIENCE ■

# Student Opportunities Coordinator

## What is my role?

Next year you will have a different person, but the role is **to liaise and facilitate collaboration between the SU, LSE Careers and Student Societies**

## So, for example:

- Going through an event idea with you and seeing where we could collaborate
- Giving you LSE Careers contacts when you need them
- Uploading your events onto CareerHub

This role is available  
for the next academic  
year!

Consider applying by  
Sun 16 Jun 2024

Either through  
CareerHub

Or

LSESU Job Vacancies

[lse.ac.uk/careers](https://lse.ac.uk/careers)



THE LONDON SCHOOL  
OF ECONOMICS AND  
POLITICAL SCIENCE ■

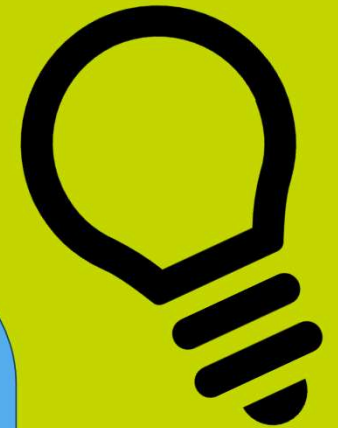
## Case Studies

### Social Mobility Team & 93% Club

- One-hour long workshop
- Shared advice on CVs and leveraging part-time work
- Society did marketing and bought refreshments
- Had a member of the 93% Club Society join as a guest speaker at one of our social mobility events and co-chair the social mobility employer panel
- Collaborated 4 times across the year

### Discover Tech & Women In Tech

- 'Mythbusting: Careers in Tech' workshop for society members
- Society members survey – what do you want to see from LSE Discover Tech
- Shared core LSE Careers events for the society newsletter.
- Co-created 'AI and Future of Work' panel event, brainstorming speakers and questions.
- Co-chaired this panel event.





THE LONDON SCHOOL  
OF ECONOMICS AND  
POLITICAL SCIENCE ■

# Your Professional Development

How will your society roles enhance your professional development?

- Teamwork and interpersonal skills
- Relationship building and management
- Project management
- Event management
- Initiative and problem solving
- Commitment to sectors/values of interest
- Impact-focused and results orientated
- Innovation and creativity
- And more...

[lse.ac.uk/careers](https://lse.ac.uk/careers)



THE LONDON SCHOOL  
OF ECONOMICS AND  
POLITICAL SCIENCE ■

# Your Professional Development

Bank of England - Graduate Development Programme

*Are you who we're looking for?*

If you're motivated to work for us, we would love to work with you. We're looking for people who **enjoy working with people** and share our values of **diverse ideas and open debate**. You need to be a **quick learner** who's able to work with tools and data sources. You also have to be **comfortable with setting your own targets, meeting tight deadlines and working under your own initiative**.

We are committed to nurturing a diverse and inclusive workforce, so we welcome applications from candidates with all backgrounds.

[lse.ac.uk/careers](https://lse.ac.uk/careers)





THE LONDON SCHOOL  
OF ECONOMICS AND  
POLITICAL SCIENCE ■

# Elevating your society involvement, to demonstrate skills & impact



[lse.ac.uk/careers](https://lse.ac.uk/careers)



THE LONDON SCHOOL  
OF ECONOMICS AND  
POLITICAL SCIENCE ■

## What does a cat do all day?

Sleep

Eat

Beg for more  
food

Dig up  
house plants

Hide in small  
places

More sleep



THE LONDON SCHOOL  
OF ECONOMICS AND  
POLITICAL SCIENCE ■

## What does a cat do all day?

**Beg for more food**

Strengthened a number of key relationships with humans, which led to an increase in treat acquisition



## How might a confident cat describe it?

Presented with the “Best Napper Award” in 2022

90% success rate when **negotiating** the acquisition of second breakfast

**Strengthened** a number of key relationships with humans, which led to an increase in treat acquisition

Successfully **project managed** digging soil out of houseplants, which led to an immediate increase in attention from humans

**Demonstrated** a flexible approach to work **proven** by my ability to squeeze into small spaces



THE LONDON SCHOOL  
OF ECONOMICS AND  
POLITICAL SCIENCE ■

## What does a cat do all day?

**Dig up house plants**

Successfully project managed digging soil out of houseplants, which led to an immediate increase in attention from humans




THE LONDON SCHOOL  
OF ECONOMICS AND  
POLITICAL SCIENCE


# Support with marketing your event

The Communications and Content team at LSE Careers looks after LSE Careers' webpages, blog, social media channels and email newsletters.

We can support you to promote your event in several ways, depending on how much of the event planning LSE Careers has been involved with.


If LSE Careers colleagues have worked with you to specifically create the content of the session itself	If your event has a careers angle and is for students or alumni, but LSE Careers hasn't been involved in planning the event
<ul style="list-style-type: none"> <li>• Cobranding on marketing materials, ie, the LSE Careers logo included alongside the LSESU logo.</li> <li>• Promotion of the event on LSE Careers' social media channels, such as Instagram, TikTok, LinkedIn, and X, as relevant.</li> <li>• Featuring the event in the LSE Careers student newsletter (sent by email every two weeks to all students).</li> </ul>	<ul style="list-style-type: none"> <li>• Share a post from your society Instagram account to the @lsecareers Instagram story.</li> </ul>

New online resource coming v soon! 




Top tips for marketing or communicating your event (coming soon)

### Meet the team



**Kunbi**  
Communications and Content Officer



**Cecily (+ Alfred)**  
Communications and Content Manager



THE LONDON SCHOOL  
OF ECONOMICS AND  
POLITICAL SCIENCE ■

# Staying in Touch

LSESU – [su.societies@lse.ac.uk](mailto:su.societies@lse.ac.uk)

Careers - [careers@lse.ac.uk](mailto:careers@lse.ac.uk)

LSESU Website –

How to work with  
LSE Careers

LSE Careers –

How can LSE  
Societies can  
work with us

Asking for the  
Student  
Opportunities  
Coordinator

## Top Tips



[lse.ac.uk/careers](https://lse.ac.uk/careers)

## Online tools available to all LSE students

Get your CV  
checked  
with  
CareerSet

CareerSet

Prepare for  
case  
interviews  
with  
CaseCoach

CASECOACH

Support for  
international  
students  
with Student  
Circus

STUDENT  
CIRCUS

Practise  
interviews  
with  
Shortlist.me

Shortlist  
Me

Practise  
psychometric  
tests with  
Graduates  
First

GF Job Assessment  
Experts

Get answers  
to your  
question  
using Ask  
an Alum

Ask an  
Alum

Browse all online tools: [bit.ly/lse-careers-online-tools](https://bit.ly/lse-careers-online-tools)

[lse.ac.uk/careers](https://lse.ac.uk/careers)





THE LONDON SCHOOL  
OF ECONOMICS AND  
POLITICAL SCIENCE ■

**Did you find this helpful – give us some feedback!**



[lse.ac.uk/careers](https://lse.ac.uk/careers)



THE LONDON SCHOOL  
OF ECONOMICS AND  
POLITICAL SCIENCE ■

**Thank You**

**[lse.ac.uk/careers](https://lse.ac.uk/careers)**